

D04013

22

23

24

25

26

27

28

29

30



**GET  
AHEAD**

*Your Path to  
Math Success!™*

**MATH**

**School**

**Implementation**

**Guide**

**A comprehensive guide for the  
successful implementation of  
*Get Ahead Math* in your school.**

Developed By:



**For use with  
*Get Ahead Math*®  
Network Version**



## Welcome to *Get Ahead Math*<sup>®</sup>

The *Get Ahead Math* software suite provides one-on-one instruction covering seven key concepts based on state and national standards for grades 3–8, including Algebra I. *Get Ahead Math* features the Get Ahead 4-Step Learning Method™ using (1) video tutorials with accredited math teachers, (2) step-by-step examples, (3) electronic worksheets that offer immediate feedback, and (4) randomized quizzes and tests.

*Get Ahead Math* also allows instructors to evaluate student performance quickly and easily through use of the online Student Management Center, a separate and secure website that records and displays individual and group progress.

## What's in this Guide?

Your *Get Ahead Math* School Implementation Guide consists of four sections that you should review before using the program with your students. The information in each section is intended to help you effectively implement *Get Ahead Math* in order to maximize the benefits to your students.

Page Section

- 2** ***Get Ahead Math* Overview.** This section describes the philosophy of *Get Ahead Math*, outlining the pedagogical basis behind its creation.
- 4** **Getting Started with the Program.** This section gives you step-by-step installation instructions for your computer, instruction on managing student usage and progress at the online Student Management Center, and an overview of how to navigate through the program.
- 15** **Running a Lab with *Get Ahead Math*.** This section helps orient your students to the program and gives tips on how to maximize their learning with the program.
- 16** **Frequently Asked Questions.**

## Good Luck and Get Ahead in Math!

For more strategies on how to use *Get Ahead Math*, or for customer service, sales, product info, or technical support, please contact Get Ahead Learning:

**888-44-AHEAD**  
**[www.getaheadmath.com](http://www.getaheadmath.com)**



## Understanding the *Get Ahead Math* Philosophy

Behind the video tutorials, text, colorful graphics, and sound effects, *Get Ahead Math* consists of sound educational methodology. The seven lesson objectives for each level are based on current math standards and requirements for each grade. These standards are often long, technical, and are overwhelming for both teachers and students. By analyzing these standards with current teachers and administrators, Get Ahead Learning determined which specific skills had the greatest impact on students learning math at each grade.

These skills became the seven foundation objectives to be included in each level of the software. Once they were determined and ordered in learning sequence, the rest of the software sections were developed to instruct, encourage, and assess. The 35-question Pre-Test and Post-Test cover all of the seven objectives and provide a baseline evaluation of your students' progress at each *Get Ahead Math* level.

Additionally, *Get Ahead Math* makes managing student data easy at the online Student Management Center—a separate instructor-based website that displays student scores across the seven objectives. The Student Management Center is not only the place where instructors set up class groups but it is also a place where instructors and administrators can identify how their students are progressing through the program. This allows a seamless transition for those students ready to move ahead and identifies those students who could use extra help.

## The *Get Ahead* 4-Step Learning Method™

Alongside creating the software around the fundamental skills based on state and national standards, *Get Ahead Math* is designed to be an effective tool to increase student achievement because the software is based on the sequential steps of the learning cycle to ensure that students understand key math concepts. Cognitive psychologists have confirmed that there are three basic modalities to process information into memory: visual (learning by seeing), auditory (learning by hearing), and kinesthetic (learning by doing).

The *Get Ahead* 4-Step Learning Method covers the three learning modalities to ensure that the most effective learning takes place. Students go through each of the seven objectives by (1) watching video tutorials (learning by hearing), (2) working through step-by-step examples (learning by seeing), (3) practicing on the worksheets (learning by doing), and (4) testing their skills by taking assessment quizzes. Thus, the *Get Ahead* 4-Step Learning Method provides students with the necessary instruction and practice to master the foundation skills required for each student in grades 3–8.

## Get Ahead Web Hybrid™

*Get Ahead Math* was developed with the flexibility to accommodate trends in computer technology and varying school site requirements. Student data is stored on a remote secure server and transferred via the internet to each computer installed with *Get Ahead Math*. The student data is also displayed for instructors on a separate website. Thus, *Get Ahead Math* taps into the benefits of internet technology, yet does not require students to navigate the web, nor is it hindered by slow page loads. The resulting product allows students to work through a sequential math program on any computer installed with *Get Ahead Math*, and allows instructors to monitor their students' progress on any computer with an internet connection.

## Get Ahead Math Topic Overview

The 7 Key Math Fundamentals in each *Get Ahead Math* level correspond to state and national grade-level standards.\* To view how these concepts align to your state's standards, visit [www.getaheadmath.com](http://www.getaheadmath.com).

|   |   |  |
|---|---|--|
| <p style="text-align: center;"><b>Level 3</b></p> <ol style="list-style-type: none"> <li>1. Place Value to 10,000</li> <li>2. Multi-Digit Addition</li> <li>3. Multi-Digit Subtraction</li> <li>4. Multiplication by a Single Digit</li> <li>5. Division by a Single Digit</li> <li>6. Geometry - Identifying Shapes</li> <li>7. Basic Fractions</li> </ol>   | <p style="text-align: center;"><b>Level 4</b></p> <ol style="list-style-type: none"> <li>1. Place Value to 1,000,000</li> <li>2. Multi-Digit Multiplication</li> <li>3. Long Division with a Single-Digit Divisor</li> <li>4. Geometry - Perimeter and Area</li> <li>5. Algebra - Find the Missing Number or Sign</li> <li>6. Add and Subtract Fractions with Like Denominators</li> <li>7. Basic Decimals - Add and Subtract Decimals</li> </ol> | <p style="text-align: center;"><b>Level 5</b></p> <ol style="list-style-type: none"> <li>1. Graphing Ordered Pairs</li> <li>2. Long Division with Multi-Digit Divisors</li> <li>3. Multiply and Divide Decimals</li> <li>4. Geometry - Area of a Parallelogram and Triangle</li> <li>5. Add and Subtract Integers</li> <li>6. Add and Subtract Fractions with Unlike Denominators</li> <li>7. Decimals, Fractions, and Percents</li> </ol> |
| <p style="text-align: center;"><b>Level 6</b></p> <ol style="list-style-type: none"> <li>1. Factoring Numbers, GCF, and LCM</li> <li>2. Geometry - Circumference and Area of a Circle</li> <li>3. Add and Subtract Mixed-Number Fractions</li> <li>4. Ratios and Proportions</li> <li>5. Multiply and Divide Integers</li> <li>6. Algebra - Solve One-Step Equations</li> <li>7. Compare and Order Fractions, Decimals, and Integers</li> </ol> | <p style="text-align: center;"><b>Level 7</b></p> <ol style="list-style-type: none"> <li>1. Order of Operations</li> <li>2. Multiply and Divide Fractions</li> <li>3. Powers, Exponents, and Roots</li> <li>4. Algebra - Solve Two-Step Equations</li> <li>5. Graphing Using the Slope Formula</li> <li>6. Simplifying Fractions with Variables</li> <li>7. Pythagorean Theorem and Right Triangles</li> </ol>                                    | <p style="text-align: center;"><b>Level 8</b></p> <ol style="list-style-type: none"> <li>1. Algebra - Solving Multi-Step Equations</li> <li>2. Add and Subtract Polynomials</li> <li>3. Multiply and Divide Polynomials</li> <li>4. FOIL</li> <li>5. Factoring Polynomials</li> <li>6. Graph a Linear Equation</li> <li>7. Quadratic Formula</li> </ol>  |

\*Level 3 = Grade 3, etc.

## Get Ahead Math Installation

The *Get Ahead Math* software was designed to be easy to install. For the most up-to-date system requirements and installation instructions, visit [www.getaheadmath.com](http://www.getaheadmath.com).

### INSTALLATION WITH THE GET AHEAD WEB HYBRID™

Program installation is performed at each individual client computer while student data is stored at a remote secured server. Internet access is required to communicate between the client computer and the remote server.

Sites with networked computers are advised to install on each individual computer intended for use with *Get Ahead Math*. “Imaging” *Get Ahead Math* out to client computers from one central computer may result in incorrect system registry entries.

1. Insert the installation discs and follow the on-screen prompts.
2. When prompted at each client computer, enter the *Get Ahead Math* account information as labeled on your installation kit.

#### SPECIAL PC NOTES

*Get Ahead Math* should be installed while logged on with Administrator rights.

#### SPECIAL MAC® NOTES

Mac® users who have set up Managed Accounts with limited-access student-users are advised to review our online support page prior to installing.

#### PC Requirements

- ♦ Microsoft Windows® 98, ME, 2000, or XP
- ♦ 1.4 GB free on hard drive
- ♦ 64 MB RAM
- ♦ 8x speed CD-ROM drive
- ♦ 800x600 screen resolution
- ♦ Headphones (or speakers)
- ♦ Internet access
- ♦ Printer recommended

#### The following applications are required and provided if necessary:

- ♦ Adobe® Reader® 5.0
- ♦ Macromedia® Flash® Player 6.0
- ♦ Microsoft® Windows Media® Player 7.1

#### Mac® Requirements

- ♦ Mac OS® 9.2 or higher (including OS X)
- ♦ G3 processor or higher (including Intel-based Mac®)
- ♦ 1.2 GB free on hard drive
- ♦ 128 MB RAM
- ♦ 8x speed CD-ROM drive
- ♦ 800x600 screen resolution
- ♦ Headphones (or speakers)
- ♦ Internet access
- ♦ Printer recommended

#### The following applications are required and provided if necessary:

- ♦ QuickTime® 6.0

### Compatibility with Student Protection Software

Schools using “write-protection” (e.g., Deep Freeze®), “reboot-to-restore” (e.g., Fortres 101™), or “web filter” security software (e.g., WebSense®) should visit [www.getaheadmath.com](http://www.getaheadmath.com) for the latest software compatibility information.

**Technical Questions? Call 888-44-AHEAD (888-442-4323).**

# Quick-Start Guide for Instructors

## Getting Started in 3 Easy Steps

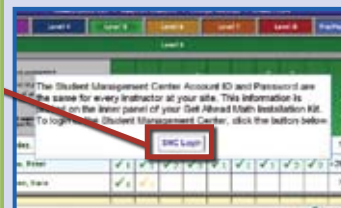
### 1. Watch the “Getting Started” videos for Students and Instructors.



Familiarize yourself with the *Get Ahead Math* experience for both students and instructors by viewing the tutorial videos, “Getting Started for Students” and “Getting Started for Instructors,” then go to the online Student Management Center.

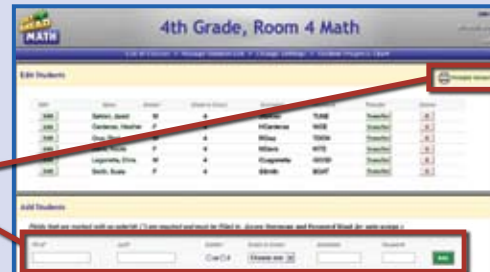
To access the online Student Management Center:

- Click the link in the “Getting Started for Instructors” video.
- Click the link on the *Get Ahead Math* login page.
- Visit [www.getaheadmath.com/login](http://www.getaheadmath.com/login).



### 2. Student Management Center Preparation: Add a teacher, create class groups, and assign student logins.

Log into the Student Management Center by inputting your Account ID and Password (found on installation kit and/or provided by school district). You will be taken to your Account Home page, where you can set up yourself as a teacher, create class groups, and assign student user names and passwords.\*



\*All students must be assigned user names and passwords. You can assign them manually, or let the program assign them automatically. For auto-assign, leave the user name and password fields blank and click “Add.” Be sure to print your students’ user names and passwords when you are finished so you can easily distribute them to each student.

### 3. Allow your students to begin using *Get Ahead Math*.



The students’ first experience with *Get Ahead Math* should include watching the “Getting Started for Students” tutorial video. Once they understand how to navigate the program, provide them with their user names and passwords to get them started.

Students must use the user name and password assigned to them in the Student Management Center.

## The Student Management Center (SMC)—District Level

### A Detailed Overview

The online Student Management Center allows both district level and school level personnel to log in and view *Get Ahead Math* student performance information pertinent to their own respective needs. For the most up-to-date information on navigating the district level for the online Student Management Center, please visit [www.getaheadmath.com](http://www.getaheadmath.com).

#### 1. Log into the Student Management Center.

- Visit [www.getaheadmath.com/login](http://www.getaheadmath.com/login).
- Log in by inputting your Account ID and Password.\*



\*Districts and school sites will each have their own respective Account Passwords. Please contact your district administrator and/or Get Ahead Learning (888-44-AHEAD) to obtain your Account ID and Password if unable to locate this information.

#### 2. Manage your account.

The District Account Information box displays the total number of students licensed to your district, the number of students added to school sites, the number of student licenses remaining, and the account expiration date.



#### 3. Add/Edit school.

Click on the green “Add New School” or the school-specific “Edit” button from the “View School List” on the District Home page to add or edit a school. When adding or editing a school site, you will have the opportunity to modify the following data:

- School name
- School SMC Password
- School Account ID (Note: Cannot be modified)
- Number of student licenses allotted to a school site



#### 4. View a specific school account page.

You can access a specific school’s account page by clicking on the school name while in the “View School List” mode from the District Home page.



# The Student Management Center (SMC)—District Level

## A Detailed Overview, cont'd

### 5. Delete a school site.



By deleting a school site, all information related to this school site will be permanently deleted. Click the “Delete” button next to the desired school site and follow the on-screen prompts.

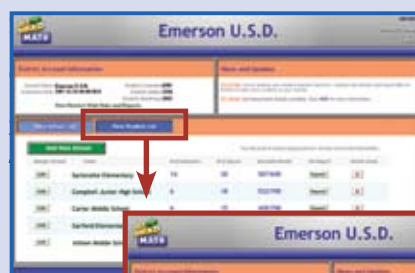
### 6. View progress reports.

Access various detail levels of student data and reports by clicking on any of the report links displayed in the Account Information section or next to a school, instructor, and/or class name. These reports detail Pre-/Post-Test performance and provide the opportunity to download student performance information to your desktop.



### 7. View student list.

Sort the data displayed in this window by clicking on the heading links (e.g., Student Name, School).



Filter the data by clicking on the heading links (e.g., Student Name, School). Enter a few characters from a student’s first or last name to filter the list. Advance to the school, instructor, and/or class next to the student’s name.



Click the check mark next to the student’s name that you would like to transfer and click the Transfer button. In the Transfer Student window, select the school, instructor, and class from the drop-down menus to which you would like to transfer this student. Click the “Yes, Transfer” button to confirm the transfer request.

# The Student Management Center (SMC)—District Level

## A Detailed Overview, cont'd

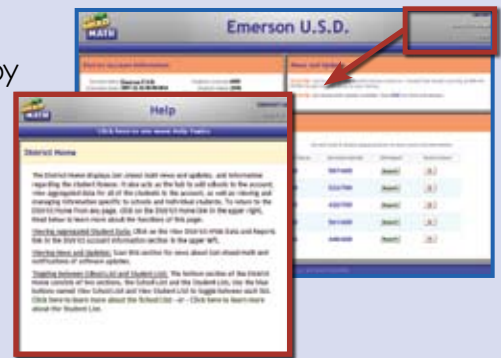
### 8. News and updates.

Review the News and Updates section regularly to obtain important information related to your account. Here you may find updates regarding student license information, software updates, and much more.



### 9. Navigate the help menu.

You can access the help pages from any location in the SMC by clicking the “Help” link in the upper right-hand corner of the page. To view additional help topics, click on the “Click here to see more Help Topics” link at the top of the help page. For additional implementation assistance, please contact Get Ahead Learning at 888-44-AHEAD.



# The Student Management Center (SMC)—School Level

## A Detailed Overview

The online Student Management Center allows both district level and school level personnel to log in and view *Get Ahead Math* student performance information pertinent to their own respective needs. For the most up to date information on navigating the school level for the online Student Management Center, please visit [www.getaheadmath.com](http://www.getaheadmath.com).

### 1. Log into the Student Management Center.

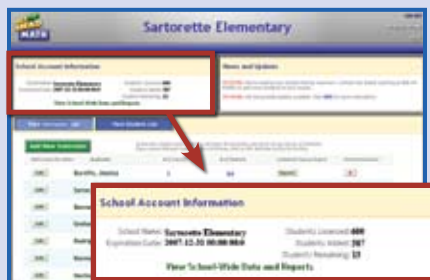
- Visit [www.getaheadmath.com/login](http://www.getaheadmath.com/login).
- Log in by inputting your Account ID and Password.\*



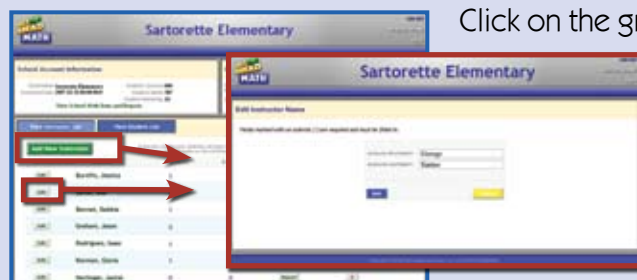
\*Each school site will have its own respective Account Password. Please contact your district administrator and/or Get Ahead Learning (888-44-AHEAD) to obtain your Account ID and Password if unable to locate this information.

### 2. Manage your account.

The School Account Information box displays the total number of students licensed to your school, the number of students added to classes, the number of student licenses remaining, and the account expiration date.



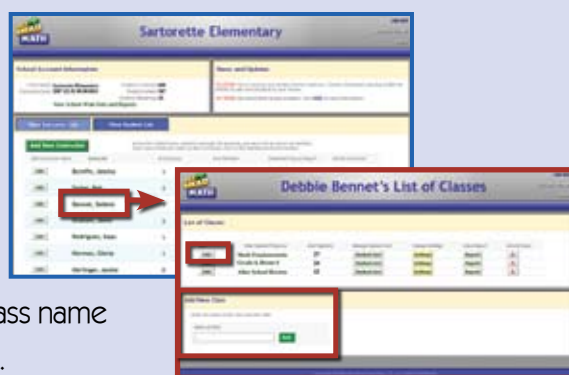
### 3. Add/Edit instructor.



Click on the green “Add New Instructor” or the instructor-specific “Edit” button from the “View Instructor List” on the School Home page to add or edit an instructor. When adding or editing an instructor, you will have the opportunity to modify the instructor’s first and last name.

### 4. Add/Edit a class.

Add a new instructor or click on the instructor’s name that you would like to associate with a new class group. Enter a class name for the class you would like to add in the “Add New Class” section and click the “Add” button. Edit an existing class name by clicking the “Edit” button next to the desired class. Make the appropriate class name change then click the “Save” button to submit the change.



## The Student Management Center (SMC)—School Level

### A Detailed Overview, cont'd

#### 5. Add/Edit students.

All students will need a user name and password to access *Get Ahead Math*. You can either manually assign student user names and passwords or let the SMC assign them automatically by leaving the user name and password field blank.\*

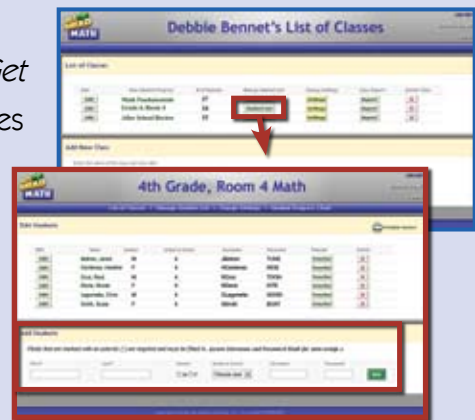
**Adding Students to a New Class** When creating a new class group, you will be automatically taken to the “Add/

\*The automatic user name and password generator only works when you add new students. If editing a student's name, be sure to manually change the student's user name and password, if necessary.

Edit Students” page for that class.

Enter the required information in the “Add Student” fields then click the “Add” button.

**Adding Students to an Existing Class** From the School Home page, click the instructor under which you would like to add a new student. Click the “Student List” button next to the desired class name and enter the required information in the “Add Student” fields then click the “Add” button.



#### 6. Delete instructor, class, and/or student.

**By deleting an instructor, a class, and/or a student all information related to these items will be permanently deleted.** Click the “Delete” button next to the desired item and follow the on-screen prompts. Before deleting an instructor, all class groups associated with that instructor must first be deleted.



# The Student Management Center (SMC)—School Level

## A Detailed Overview, cont'd

### 7. Modify class-specific usage settings.

You can customize the usage settings for each class group created. These settings allow you to determine how prescriptive and/or how flexible the student experience will be within *Get Ahead Math*. Click the “Settings” button from an instructor’s class list view. Modify the desired settings then click the “Save” button to have the adjusted settings apply to your students’ next *Get Ahead Math* session.



### 8. View progress reports.



**Pre-/Post-Test and Downloadable Data** Access various detail levels of student data and reports by clicking on any of the report links displayed in the

Account Information section or next to a school, instructor, and/or class name. These reports detail Pre-/Post-Test performance and provide the opportunity to download student



performance information to your desktop.



| Test Name      | Score | Score | Score | Score |
|----------------|-------|-------|-------|-------|
| Pre-Test       | 4     | 400   | 400   | 400   |
| Post-Test      | 4     | 400   | 400   | 400   |
| Math Quiz      | 4     | 400   | 400   | 400   |
| Math Worksheet | 4     | 400   | 400   | 400   |

#### Detailed Class Progress

Detailed class progress charts can be accessed by selecting the desired instructor name,



then by clicking on the desired class name. From the class’ Student Progress Chart page, you can toggle between the various levels and the Pre-/Post-Test view to review student progress specific to that class.



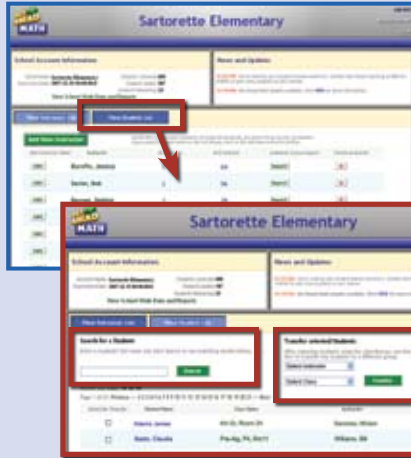
#### Individual Student Reports

Student names throughout the SMC are live links that will advance you to the Individual Student Report for that student when clicked. Each quiz, test, and worksheet title also serves as a link to display specific performance information related to the selected activity.

## The Student Management Center (SMC)—School Level

### A Detailed Overview, cont'd

#### 9. View student list.



Sort the data displayed in this window by clicking on the heading links (e.g., Student Name, Instructor).

**Search for a Student** Enter as little as a few characters from a student's first or last name to complete a school-wide search for that student. Advance to the instructor and/or class group by clicking on the links next to the student's name.

**Transfer a Student** Place a check mark next to the student's name that you would like to transfer. Select the instructor and class from the drop-down menus to which you would like to transfer this student. Click the transfer button and confirm the transfer request.

#### 10. News and updates.

Review the News and Updates section regularly to obtain important information related to your account. Here you may find updates regarding student license information, software updates, and much more.



#### 11. Navigate the help menu.

You can access the help pages from any location in the SMC by clicking the "Help" link in the upper right-hand corner of the page. To view additional help topics, click on the "Click here to see more Help Topics" link at the top of the help page. For additional implementation assistance, please contact Get Ahead Learning at 888-44-AHEAD.

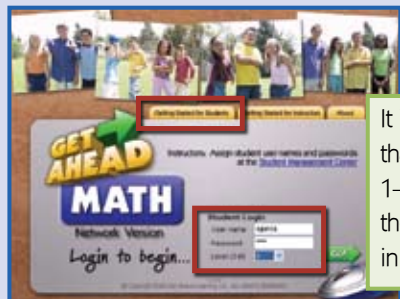


# The Student Experience

## A Detailed Overview

### 1. View the “Getting Started for Students” tutorial video and log in.

After students have watched the tutorial video, distribute the student user names and passwords you set up in the SMC, and allow students to log in by selecting the level you have



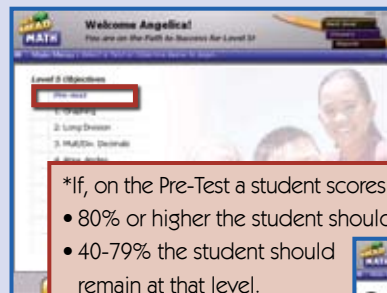
assigned to them.

It is recommended that students begin 1–2 levels below their current grade in school.

### 2. Take the Pre-Test.

Students should begin by taking the Pre-Test. Depending on their score, they may be

prompted to select a different level.\*



\*If, on the Pre-Test a student scores:

- 80% or higher the student should move up to the next level.
- 40–79% the student should remain at that level.
- 39% or lower the student should move down to the previous level.

Note: Level 7 = Pre-Algebra  
Level 8 = Algebra I



### 3. Follow the Get Ahead 4-Step Learning Method™.

Once the appropriate levels have been determined, students should begin with the first objective and follow the Get Ahead 4-Step Learning Method in order.



#### The Get Ahead 4-Step Learning Method

1. View the video tutorial.
2. Review the step-by-step examples.
3. Complete the worksheet activities.
  - a. Complete the printed worksheet in the *Get Ahead Math* workbook.
  - b. Enter answers into the electronic worksheet to obtain feedback.
4. Test mastery with topic-specific quizzes.

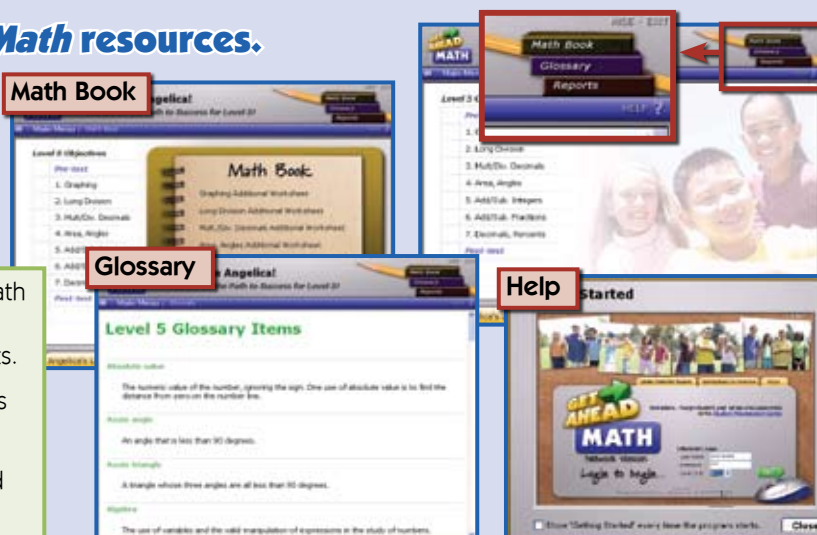
### 4. Utilize the *Get Ahead Math* resources.

Encourage students to use the Math Book, Glossary, and Help resources in the *Get Ahead Math* program.

The **Math Book** provides additional math tools such as flash cards, drill sheets, review pages, and additional worksheets.

The **Glossary** contains useful math terms and their definitions.

The **Help** link opens the “Getting Started for Students” tutorial video.



# The Student Experience

## A Detailed Overview, cont'd

### 5. Take the Post-Test.

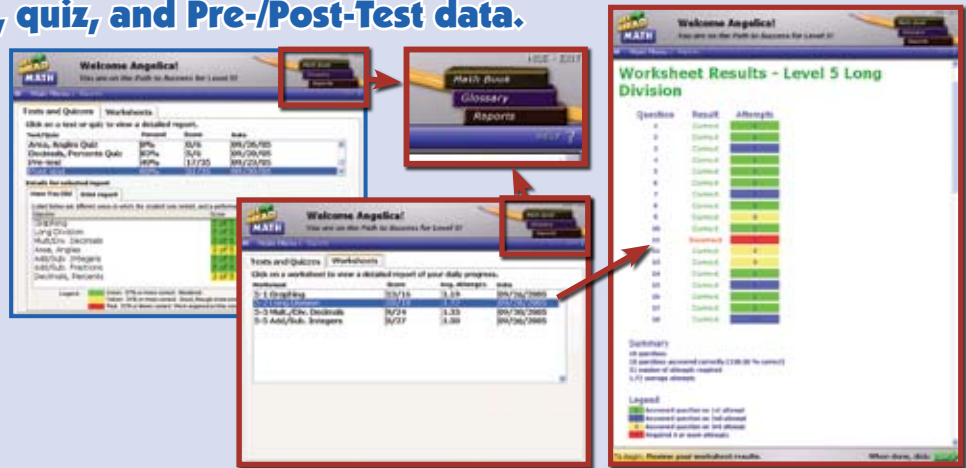
Once a student has successfully completed all 7 *Get Ahead Math* objectives for a single level, he or she should take the Post-Test. Once the student passes the Post-Test (the default passing score is 80%), he or she will receive a certificate of completion.

Be sure to access the SMC to track student progress. Remember, the SMC tracks student data in a variety of formats, including a Pre-/Post-Test comparison chart.



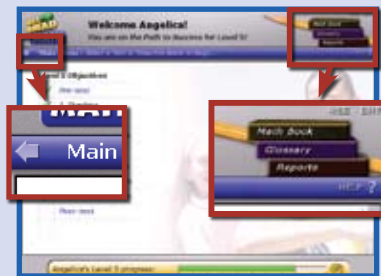
### 6. View worksheet, quiz, and Pre-/Post-Test data.

Students can view their worksheet, quiz, and Pre-/Post-Test data by clicking on the "Reports" tab.



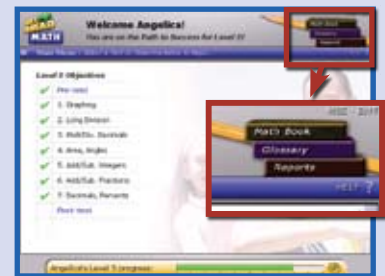
### 7. Navigate the program.

- Use the blue arrow to go back to the previous screen. The arrow will ultimately allow you to log out of the program.
- Minimize the program by clicking on the "Hide" link in the upper right-hand corner.



### 8. Complete your session.

Students **must** log out of the program in order for their data to be stored. Students can log out by clicking on the "Exit" link in the upper right-hand corner, or by clicking on the blue arrow (see step 7).



## Running a Lab with *Get Ahead Math*

*Get Ahead Math* is an amazing learning tool that will motivate your students and that will build your students' math mastery at the same time. *Get Ahead Math* works best in a classroom/lab environment when teachers actively manage their students' learning. The following are the best practices used to increase your students' performance with the program and to increase your instructional productivity while working with *Get Ahead Math*.

### Set Clear Usage Expectations

Setting clear expectations with the students using *Get Ahead Math* will ensure a structured work environment. The following areas should be addressed with students when communicating expectations:

#### Think About and Communicate:

- ✦ Days and times *Get Ahead Math* will be used.
- ✦ Location to keep scrap paper and pencils.
- ✦ Location to keep workbooks.
- ✦ Location to place Progress Chart.
- ✦ Location to place Rules Poster.
- ✦ Type of assistance you will be able to provide (e.g., amount of instructional assistance provided on quizzes and tests versus worksheets).
- ✦ Class settings determined at the online Student Management Center (e.g., number of attempts at each quiz allowed in a log in session, students being locked into the Get Ahead 4-Step Learning Method).
- ✦ Student activity when a computer is unavailable (e.g., complete workbook activities).
- ✦ General computer usage expectations (e.g., lab protocol).

### Incorporate Effective Lab Teaching Techniques

Teaching a large group of students in a computer lab can provide a teacher with many challenges. Following these tips will allow for a more productive learning environment:

**Body Positioning** Position your body so that you can see the majority of the students in the lab. This will ensure students are staying on task and will ensure that you can address any potential issues before they arise.

**Look Up Often** When instructing a student, scan the room regularly to look for any other questions.

**Prioritize the Students' Needs/Questions** First determine what questions require the least amount of time to solve (e.g., tech questions vs. content questions) and address those questions first.

**Acknowledge Students' Hands When Raised** Let a student know that you see his or her hand in the air and that you will be with him or her in just a minute.

**Guide Students** Guide students to specific resources in the program to help them find the answer to their questions.

**Group Teach** If you notice a few students are having the same challenge on the same concept, gather them together and provide instruction in a small group environment. Be sure to let the other students know that you will be unavailable for the next 2–3 minutes while you are helping the small group.

**Do NOT Over Coach** Over coaching the students by providing them with the answer—whether directly or indirectly—will only enable them to move onto the next learning objective prematurely. Their concept mastery will be hindered as a result of over coaching.

### Maintain Classroom Behavior Management Techniques

Being comfortable and effective with your behavior management will allow you to provide your students with an orderly environment in which they are better able to learn and in which you are better able to teach. Continue to manage student behavior in a lab as you would in your classroom.

### Provide Positive Reinforcement

*Get Ahead Math* offers many opportunities to provide students with positive reinforcement. Those means of positive reinforcement are found within the software as well as with the *Get Ahead Math* Progress Chart. Positive reinforcement is important in helping students stay motivated in learning more challenging material. Your role as a teacher provides you with an additional opportunity to provide positive reinforcement. Here are some tips to creating a positive learning environment:

- Celebrate student accomplishments.
- Share your excitement for learning math.
- Create unique performance reward systems with the progress chart.

## Frequently Asked Questions

To view Frequently Asked Questions related to *Get Ahead Math*, please visit [www.getaheadmath.com](http://www.getaheadmath.com) for the most updated FAQs. If you are unable to find an answer to your question or are experiencing a technical issue with *Get Ahead Math*, please contact Get Ahead Learning by phone at 1-888-44-AHEAD (1-888-442-4323).



ISBN 1-59441-771-7



0 44222 18070 6

Printed in the U.S.A.