

OS 10.4 Installation Guidelines

For the latest version of this document, please visit
www.getaheadmath.com/training_support.htm

I. Installation Instructions When Not Using Managed Accounts

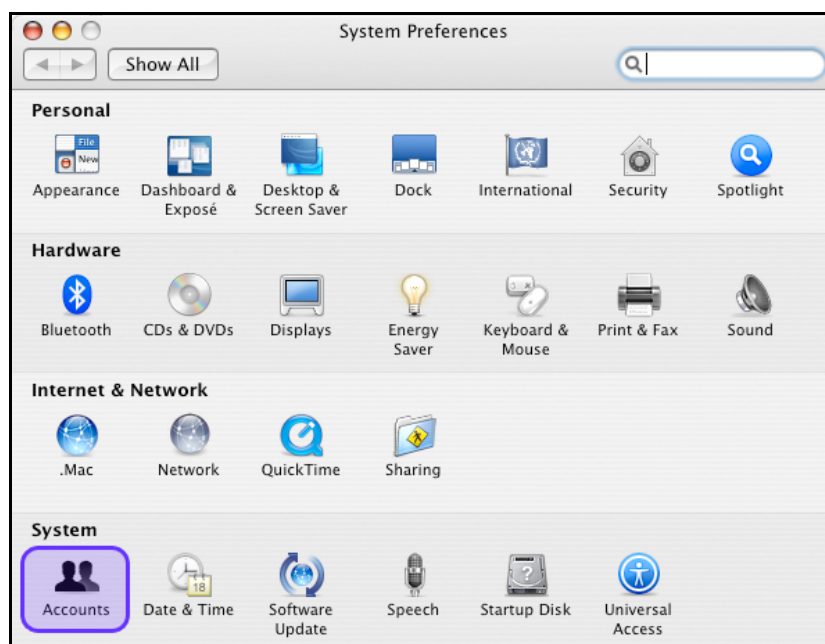
1. Log into the account students use.
2. Click on the *Get Ahead Math* Installer 1 logo.
3. You will be prompted by OS 10.4 to authenticate the installation. Type an administrator's name and password to continue the installation process.
4. Follow the on-screen prompts to install the program.
5. Make sure you enter the *Get Ahead Math* Account Information found on your installation package.
6. After installing Disc 1, insert and install Disc 2 and Disc 3.

If you have any difficulty installing *Get Ahead Math*, contact Get Ahead Learning at 888-44-AHEAD.

II. Installation Instructions When Using Managed Accounts

Many schools with Mac OS 10.4 use managed accounts to limit student access to certain programs and files. If your students will use *Get Ahead Math* in a managed account, it may be necessary to alter the settings to ensure a successful launch of the program. Please review the following steps:

1. Log into the managed account that students use and install the program following the six steps listed in Section I.
2. You will be prompted by OS 10.4 to authenticate the installation. Type an administrator's name and password to continue the installation process.
3. After the program is installed, log out of the student account and log into an administrator account.
4. Open the System Preferences and click Accounts.



5. Select the managed account that students use. It may be necessary to unlock the screen for changes by clicking the lock icon in the lower left and entering an administrator's name and password.

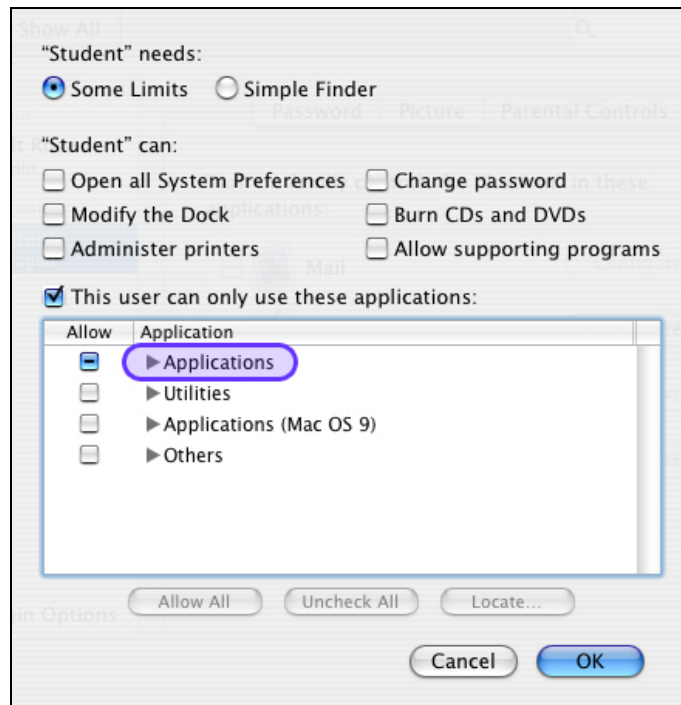


6. After unlocking the screen and selecting the appropriate managed account, click the Parental Controls tab. Then check the box next to Finder & System and click Configure.

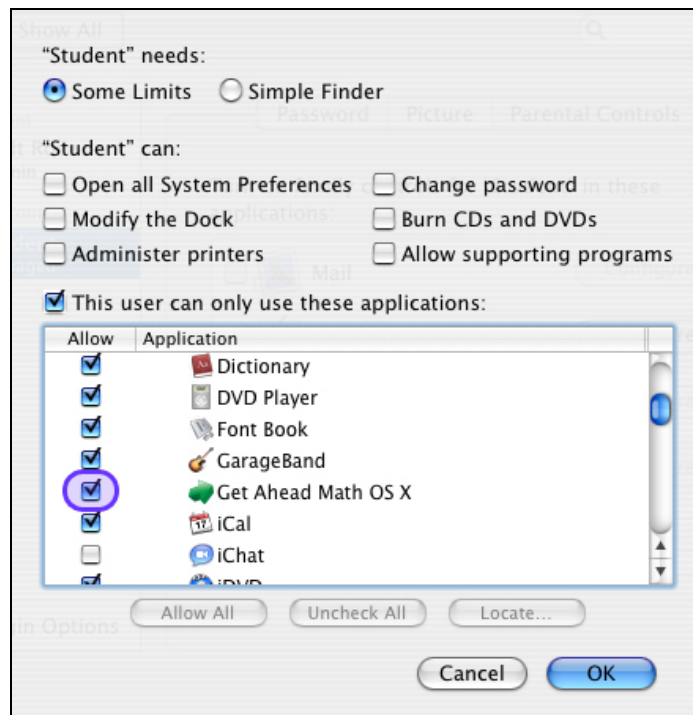


7. If the check box next to “This user can only use these applications” is checked, click the arrow to expand the list of Applications.

Note: Alternatively, you can uncheck the box next to “This user can only use these applications” and skip the next step. Please note that this will allow students to use all of the applications in the Applications folder.



8. Check the box next to “Get Ahead Math OS X”. Then click OK. Your students are ready to use *Get Ahead Math* in the managed account.



If you have any difficulty applying these settings, contact Get Ahead Learning at 888-44-AHEAD. For the latest version of this document, please visit www.getaheadmath.com/training_support.htm.